

CAVITY CLOSERS

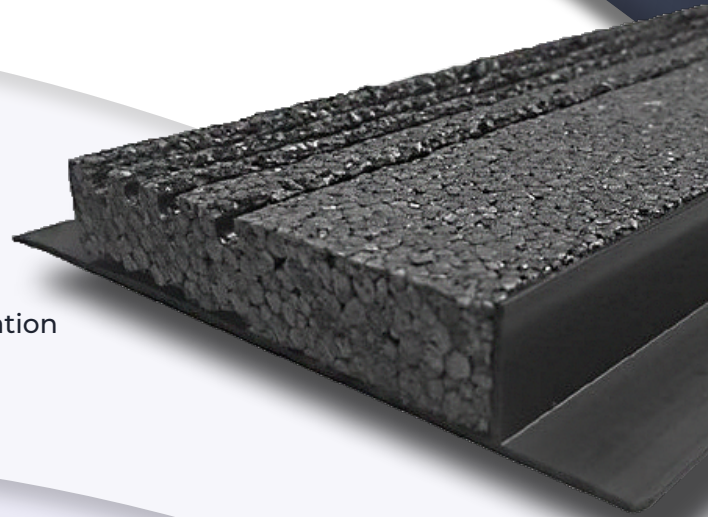
PURPOSE

Provides a **simple & highly effective** method for closing cavities around openings in masonry cavity, timber frame and steel frame system wall constructions.

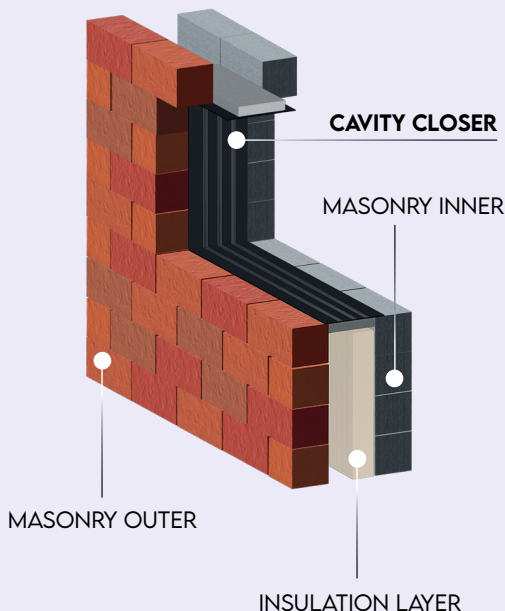
COMPLIES WITH ALL RELEVANT BUILDING REGULATIONS & BRITISH STANDARDS

BENEFITS

- Fully ridged plastic
- Prevents cold bridging
- Easy to install with simple cut-to-size indicators
- Reduces risk of condensation, mould and moisture migration
- Suitable for use in both new build and refurbishment
- Overcomes cavity width variations



INSTALLATION



- Measure the opening of the window or door
- Cut profile to required length using a fine toothed saw
- Measure the cavity opening
- Cut the insulation to the required width to fit the cavity, but do not cut the plastic outer!
- The width of the cavity will determine which profile (50-100mm or 100-150mm) you use
- Press the insulation side of the cavity closer into the cavity opening, then fix the plastic flange securely with grab adhesive or clout nails

VERTICAL JOINTING

To minimise waste, sections can be jointed. To stop water ingress, ensure all joints are tightly butted 45° downwards towards the outer leaf.

CORNER JOINTING

When jointing a horizontal piece to a vertical piece, you must trim both PVC flanges. To stop water penetration, allow the vertical piece to extend below the horizontal one.

Code	Finish	To suit cavity	Length	Pack Qty
RCCU1002440	GREY	50-100 mm	2.44 m	10
RCCU1502440		100-150 mm	2.44 m	10

